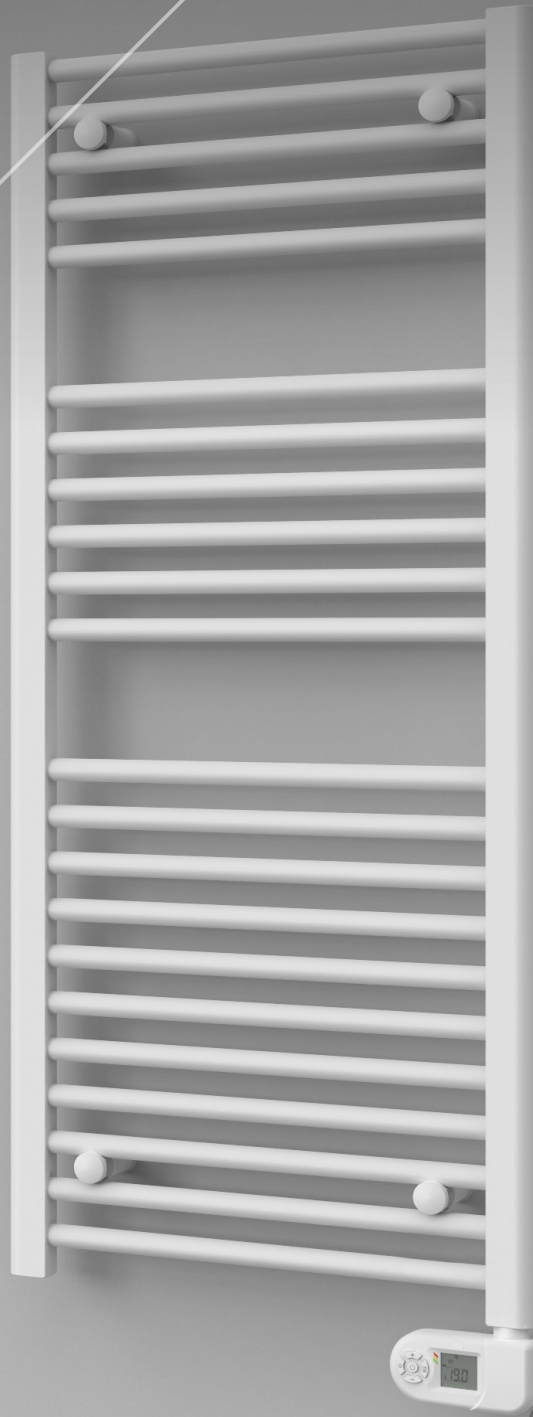


**ELECTRIC**<sup>Ⓢ</sup>  
SERIES



**FANTASIA  
FLUID**

The Fantasia Fluid is an oil filled towel radiator that provides effective heating and practical drying performance with space for two towels. This popular towel rail has 22 horizontal round tubes and semi-oval manifolds which together result in an efficient, versatile silhouette that also produces heat quickly and flexibly.

The towel radiator is filled with a fluid which is heated up using the electrical element immersed in the fluid inside. This maintenance free and specially formulated fluid is designed to distribute the heat quickly and evenly across the towel radiator, which in turn emits the heat into your room through radiation.

Stelrad UIN	Colour	Height mm	Length mm	Heat output		Electric voltage - Frequency
				Power (Watts)	Btu/hr	
E003-1041-0500	White	1041	500	500	1707	230V - 50Hz
E003-1266-0550	White	1266	550	700	2390	230V - 50Hz
E003-1626-0600	White	1626	600	1000	3414	230V - 50Hz
E004-1041-0500	Anthracite	1041	500	500	1707	230V - 50Hz
E004-1266-0550	Anthracite	1266	550	700	2390	230V - 50Hz
E004-1626-0600	Anthracite	1626	600	1000	3414	230V - 50Hz
E005-1041-0500	Chrome	1041	500	300	1024	230V - 50Hz
E005-1266-0500	Chrome	1266	500	400	1365	230V - 50Hz

### Integrated control panel

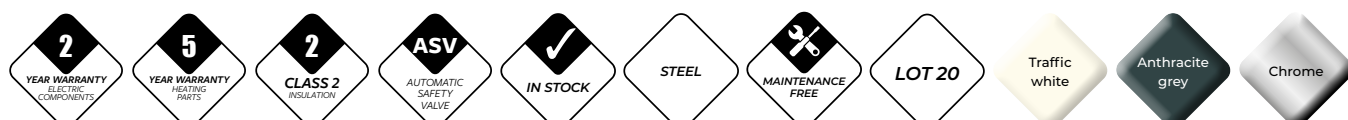
The colour coordinated push button digital control with an LCD display is located on the bottom right hand side of the towel radiator, with numerous functions for efficiency, energy saving and safety in mind.



### Installation

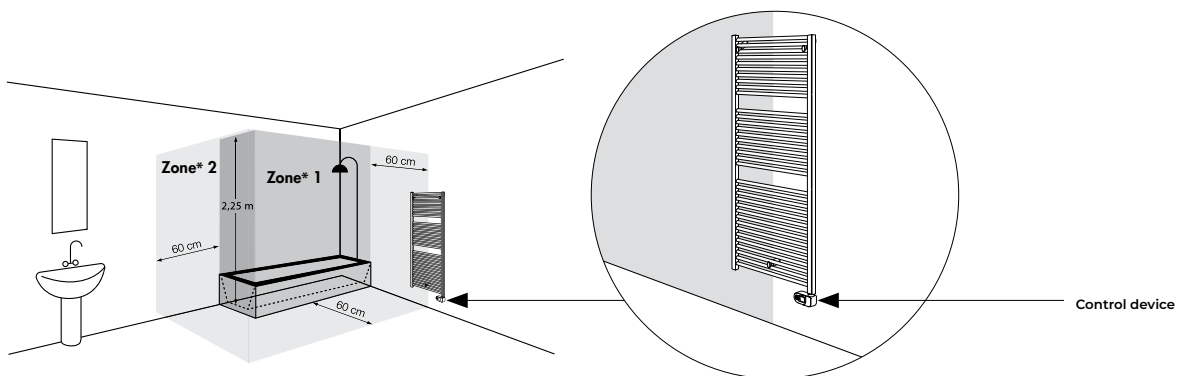
This radiator must be wall mounted and must not be installed immediately below or in front of a power socket or in contact with the wall or floor. If installed within a bathroom, the radiator must be mounted outside zone 1 and the switch / electric control must be in zone 3.

Please note: the cable entry point is situated on the bottom right-hand side.




### Positioning and installing

- This appliance is designed to heat domestic rooms or similar and to dry towels..
- This appliance is designed to dry towels washed in water only. It must not be used for other purposes.
- The appliance must be used permanently mounted on a wall as described in the instructions.
- Install the appliance with the control device at the bottom right and the control keys towards the front.
- In bathrooms (with bath or shower), install the appliance outside zone 1.
- The appliance must be installed in such a way that the electronic controls and other control devices may not be touched by someone in the bath or shower. The towel warmer must not be connected with a plug.
- No need to maintain or service this product once installed. However, should any technical problems arise, contact a qualified professional or your local dealer. All operations on the appliance must be carried out by a qualified professional who before performing maintenance must make sure the appliance is turned off, cold and disconnected from the household mains.



### Electrical connection

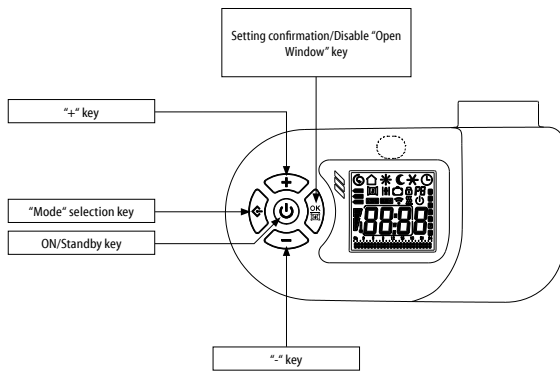
- To be installed by a specialised engineer in accordance with the applicable standards in the country concerned.
- When the appliance is installed, make sure the power is off and the mains switch is in the “O” position.
- The appliance requires a 230 V ~ 50 Hz power supply. Make sure the power line is appropriate for the data shown on the appliance’s rating plate.

Voltage: 230 V~ 50 Hz  
 Insulation class: II   
 Protection class: IP34

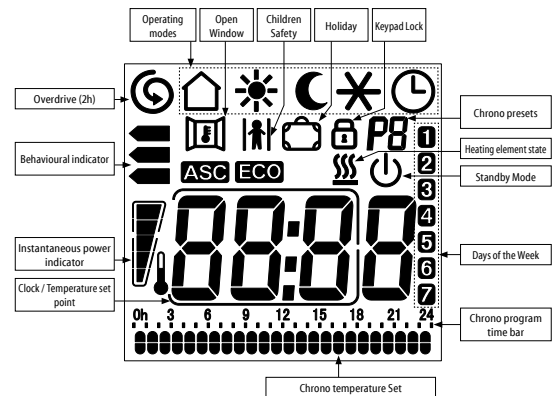
Power [W]	200	300	400	500	600	700	750	900	1000	1250	1500	2000
Rated current [A]	0.9	1.3	1.8	2.2	2.6	3	3.3	4	4.5	5.5	6.5	9

- Make sure the fixed power line is fitted with a disconnecting switch allowing the appliance to be disconnected completely from the household mains, included the Pilot Wire, when present, in accordance with the wiring rules.
- If the appliance is installed in a bathroom, the power line must be fitted with a 30 mA RCD (high sensitivity residual current protection device). The power supply line and Pilot Wire control unit must be protected by the same RCD.
- Permanently connected appliances must be connected using a connector block placed within a proper junction box.
- When installing the appliance in damp rooms (kitchen, bathroom), the point of connection with the household mains must be at least 25 cm from the floor.
- If the Pilot Wire is not connected to the programming unit, it must be terminated and insulated. Under no circumstances should the Pilot Wire be connected to the earth.
- Make sure the power cable cannot in any way come into contact with the surface of the appliance.

### Control Panel



### Display



### Operating modes

- Pilot Wire (n/a in the UK)
- Comfort
- Night / Eco
- Anti-freeze
- Chrono
- Energy saving
- Standby

### Functions

- Adaptive Start Control
- Open window
- Child safety
- Override
- Holiday
- Keypad lock
- Behavioural indicator
- Instantaneous power indicator